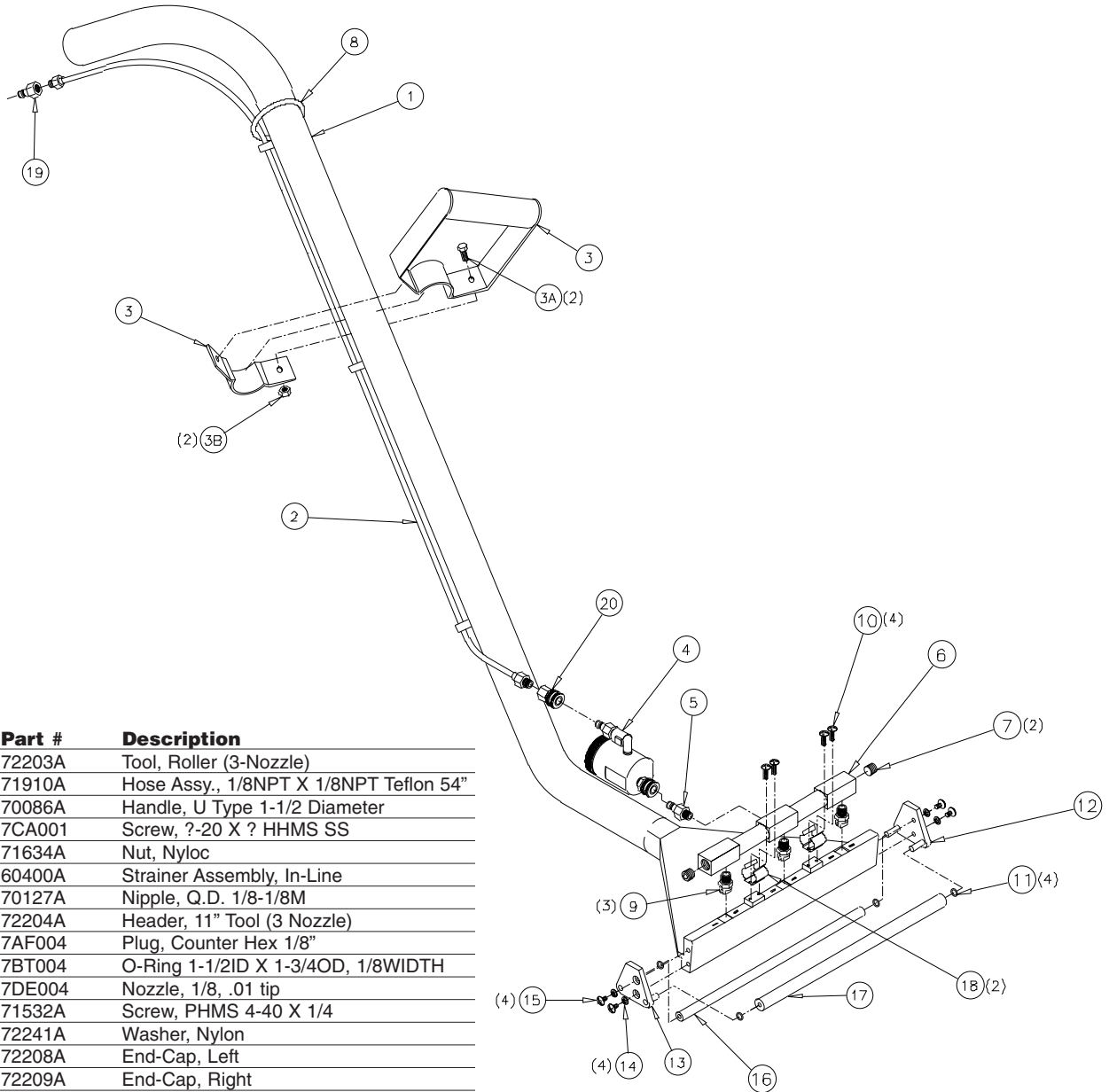




Commercial Wand



Item #	Part #	Description
1	72203A	Tool, Roller (3-Nozzle)
2	71910A	Hose Assy., 1/8NPT X 1/8NPT Teflon 54"
3	70086A	Handle, U Type 1-1/2 Diameter
3A	7CA001	Screw, ?-20 X ? HHMS SS
3B	71634A	Nut, Nyloc
4	60400A	Strainer Assembly, In-Line
5	70127A	Nipple, Q.D. 1/8-1/8M
6	72204A	Header, 11" Tool (3 Nozzle)
7	7AF004	Plug, Counter Hex 1/8"
8	7BT004	O-Ring 1-1/2ID X 1-3/4OD, 1/8WIDTH
9	7DE004	Nozzle, 1/8, .01 tip
10	71532A	Screw, PHMS 4-40 X 1/4
11	72241A	Washer, Nylon
12	72208A	End-Cap, Left
13	72209A	End-Cap, Right
14	7CY001	Washer, IT-Lock #10
15	72091A	Screw #10-24 X 3/8 PHMS SS
16	71386A	Roller, Rear 7/16OD
17	71385A	Roller, Front 9/16OD
18	71700A	Clip, Spring
19	70101A	Nipple, Quick Disconnect 1/8"-1/8"
20	70100A	Coupler, Quick Disconnect 1/8"-1/8"